

# Barbuda

**3 Bedrooms**  
**2 Baths/Den**

**1717 sq/ft**  
**of Living Space**

**Total sq/ft of 2488**

Which Includes...

Lanai – 248 sq/ft

Entry – 71 sq/ft

Garage – 452 sq/ft

## Optional Features

- Porch
- Pool
- Extended Garage

Color renderings and landscaping shown are for artistic purpose only and do not necessarily represent actual color choices and landscaping for home exterior.

Elevations shown subject to change.

Plans, features and availability are subject to change without notice.

Square footages are approximate.

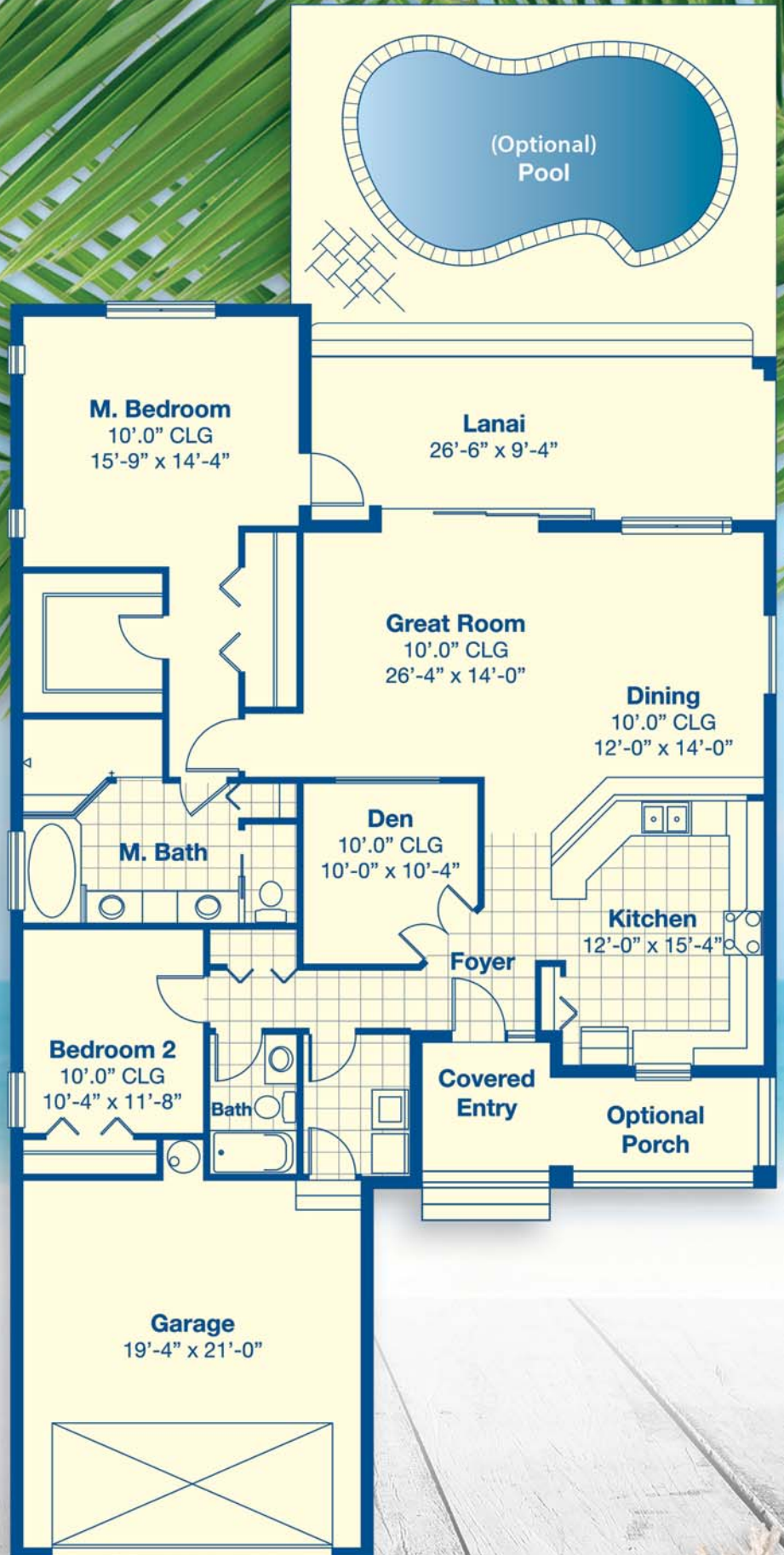
Ver: 03/17/18



**941-698-9200**

8195 Placida Rd • Placida, FL 33946

[www.CoralCaye.net](http://www.CoralCaye.net)



**CORAL CAYE**

Custom Coastal Elegance





# Barbuda

Elevation Options



Elevation  
Option: **A**



Elevation  
Option: **B**

Elevation  
Option: **C**



Elevation  
Option: **D**

Color renderings and landscaping shown are for artistic purpose only and do not necessarily represent actual color choices and landscaping for home exterior. Elevations shown subject to change. Plans, features and availability are subject to change without notice. Square footages are approximate. Ver: 03/17/18

CORAL CAYE

